

# The DOMINATOR

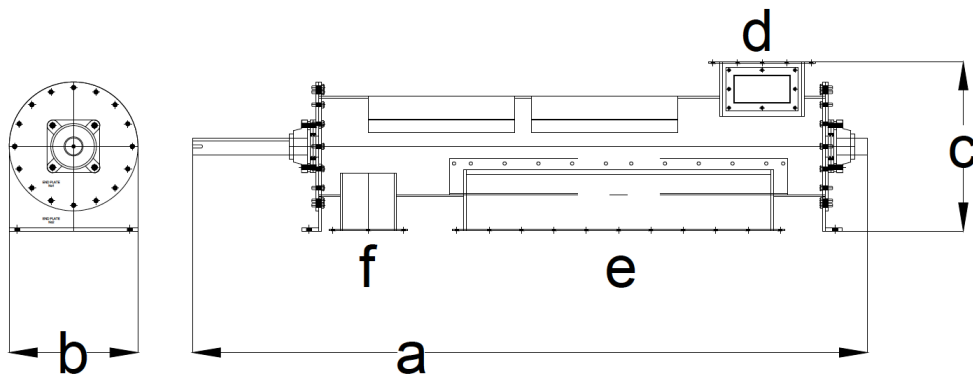
## Depackaging Machine 1800

### Features

- Heavy duty construction
- Solid steel 120mm dia shaft lined with steel paddles
- Lined with two mesh screens through which the organic is forced through
- Water can be injected to barrel to aid cleaning / wash out material if needed
- Two inspection doors for easy access to internals
- Can be used as a standalone machine or part of a production line
- Mechanically and electrically interlocked to prevent accidental start-up.

### Specifications

- 120mm dia solid steel shaft lined with M30 threaded paddles
- 350mm dia barrel, 10mm thick. Painted carbon steel or 316 Stainless steel
- Up to 15kW motor directly mounted to shaft via gearbox
- Process up to 4m<sup>3</sup> per hour of wet or dry product
- Up to 46 paddles - several types available to suit application
- 5-30mm screen sizes available
- Water tight access / inspection doors.



### Options

- Stainless steel contact parts
- Range of screen sizes and paddle types available
- Rotation sensor
- Shaft speed to suit application
- Infeed conveyor and hopper
- Access platform and stand
- Outfeed conveyors
- Electrical control panels.

### Dimensions (mm)

**Overall length (a)** - 2400

**Width (b)** - 460

**Height (c)** - 600

**Inlet (d)** - 300 x 300

**Outlet 1 (e)** - 1100 x 370

**Outlet 2 (f)** - 200 x 300